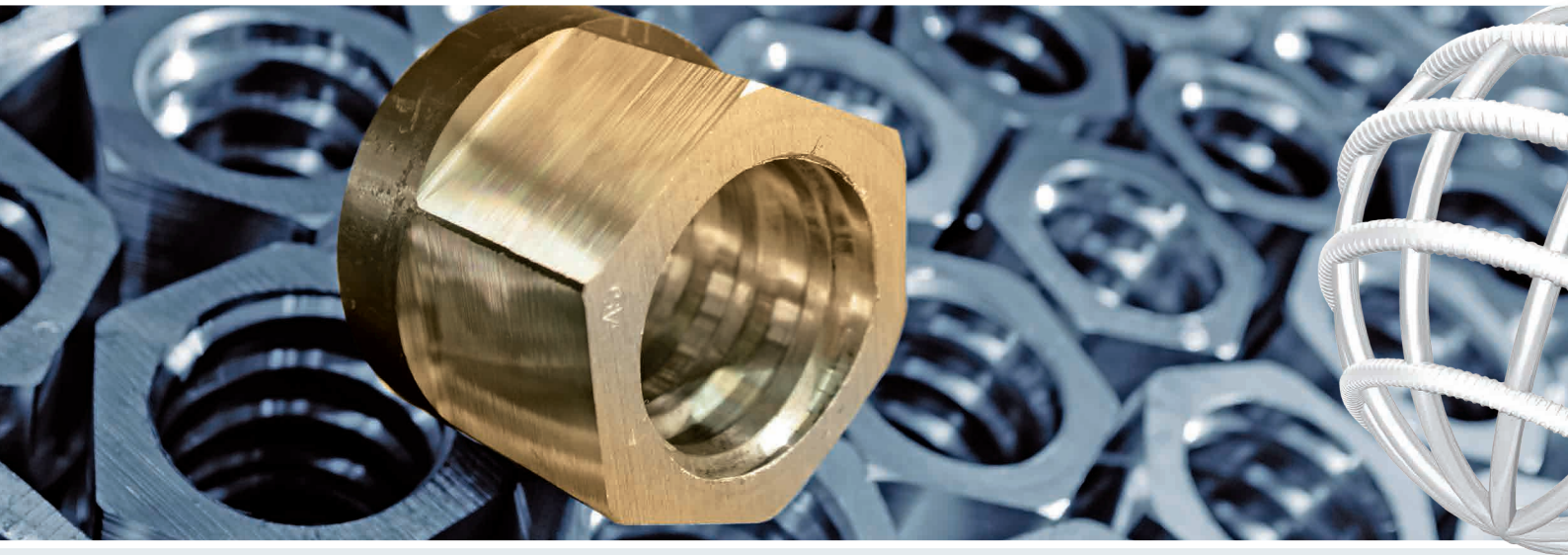


Katalog SAS 670 / 800 Ø 18 - 75 mm

Catalogue SAS 670 / 800 Ø 18 - 75 mm

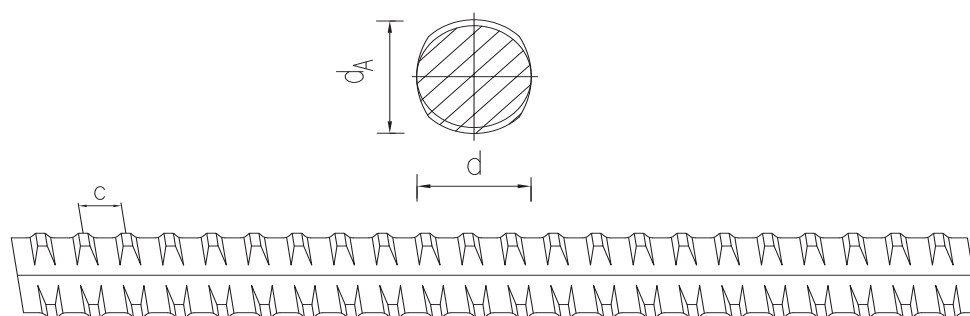


SAS SYSTEMS

SAS Gewindestäbe

SAS thread bars

SAS 670 / 800 Ø 18 - 75 mm



SAS Gewindestab

warmgewalzt, Rippenstahl - rechtsgängig

SAS thread bar

hot rolled, ribbed - right hand thread

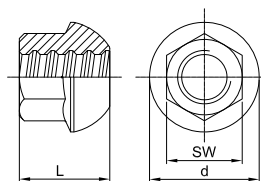
| d | [mm] | 18 | 22 | 25 | 28 | 30 | 35 | 43 | 50 | 57,5 | 63,5 | 75 |
|--|--------------------|---|------|------|------|------|------|-------|-------|-------|-------|-------|
| max d _A | [mm] | 21 | 25 | 28 | 32 | 34 | 40 | 48 | 55 | 63 | 70 | 82 |
| c | [mm] | 8 | 8 | 10 | 11 | 11 | 14 | 17 | 18 | 20 | 21 | 24 |
| f _{yk} (f _{0,2k}) / f _{tk} / A ₁₀ ¹⁾ | | 670 N/mm ² / 800 N/mm ² / ≥ 5 % | | | | | | | | | | |
| F _{yk} (F _{0,2k}) | [kN] | 170 | 255 | 329 | 413 | 474 | 645 | 973 | 1315 | 1740 | 2122 | 2960 |
| F _{tk} | [kN] | 204 | 304 | 393 | 493 | 565 | 770 | 1162 | 1570 | 2077 | 2534 | 3535 |
| A | [mm ²] | 254 | 380 | 491 | 616 | 707 | 962 | 1452 | 1963 | 2597 | 3167 | 4418 |
| G | [kg/m] | 2,00 | 2,98 | 3,85 | 4,83 | 5,55 | 7,55 | 11,40 | 15,40 | 20,38 | 24,86 | 34,68 |

¹⁾ Prozentuale Gesamtdehnung bei Höchstlast / percentage total elongation at maximum force

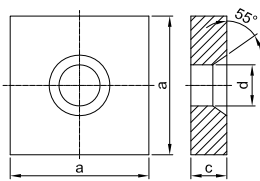
Die Gewichtsangaben sind Mittelwerte. Die tatsächlichen Gewichte können auf Grund von Fertigungstoleranzen abweichen.
Weight specifications are average values. The actual values may deviate due to fabrication tolerances.

SAS SYSTEMS

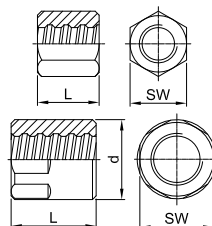
Kugelbundmutter 55° dome nut 55°



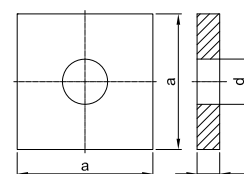
Ankerplatte Konus 55° anchor plate cone 55°



Ankermutter gerade anchor nut flat



Ankerplatte gerade anchor plate flat

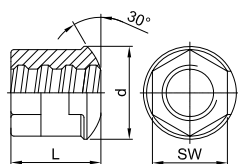


Ø [mm] SW x L x d [mm] [kg] a x c x d [mm] [kg] SW x L x d [mm] [kg] a x c x d [mm] [kg] a x c x d [mm] [kg]

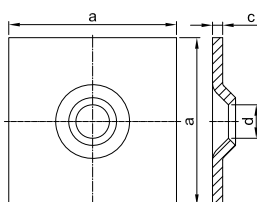
| | TR 2001 | | TR 2011 | | TR 2002 | | TR 2138 | | TR 2139 | |
|------|-----------------|------|---------------|-------|-----------------|------|---------------|------|---------------|-------|
| 18 | 32 x 35 x 43 | 0,18 | 100 x 25 x 27 | 2,20 | 36 x 45 | 0,29 | - | - | 100 x 25 x 23 | 1,85 |
| 22 | 36 x 45 x 53 | 0,32 | 110 x 30 x 32 | 2,62 | 41 x 50 | 0,39 | - | - | 110 x 30 x 27 | 2,68 |
| 25 | 41 x 50 x 60 | 0,43 | 125 x 30 x 35 | 3,39 | 46 x 55 | 0,53 | 110 x 25 x 30 | 2,2 | 125 x 30 x 30 | 3,48 |
| 28 | 46 x 55 x 67 | 0,62 | 135 x 35 x 40 | 4,59 | 50 x 60 | 0,67 | 115 x 30 x 30 | 2,85 | 120 x 30 x 34 | 3,18 |
| 30 | 50 x 60 x 71 | 0,66 | 145 x 35 x 40 | 5,32 | 55 x 65 | 0,90 | 130 x 30 x 36 | 3,7 | 130 x 35 x 36 | 4,36 |
| 35 | 60 x 70 x 83 | 1,30 | 170 x 40 x 47 | 8,36 | 65 x 70 | 1,38 | 150 x 35 x 42 | 5,7 | 150 x 40 x 42 | 6,63 |
| 43 | 70 x 85 x 102 | 2,22 | 210 x 50 x 58 | 15,90 | 80 x 90 | 2,62 | 185 x 45 x 50 | 11,4 | 185 x 55 x 50 | 13,93 |
| 50 | 80 x 95 x 116 | 3,31 | 240 x 55 x 70 | 22,59 | 80 x 100 x 90 | 2,94 | 210 x 50 x 60 | 16,2 | 215 x 60 x 60 | 20,44 |
| 57,5 | 90 x 115 x 137 | 5,32 | 275 x 60 x 75 | 32,80 | 90 x 120 x 102 | 4,42 | 250 x 55 x 67 | 25 | 245 x 65 x 67 | 28,83 |
| 63,5 | 100 x 125 x 151 | 7,26 | 300 x 65 x 82 | 42,20 | 100 x 145 x 114 | 6,89 | 265 x 60 x 74 | 30,6 | 270 x 70 x 74 | 37,7 |
| 75 | 120 x 150 x 178 | 12,2 | 325 x 70 x 88 | 53,10 | 100 x 130 x 108 | 4,04 | 320 x 70 x 86 | 53 | 325 x 70 x 86 | 54,7 |

SAS SYSTEMS

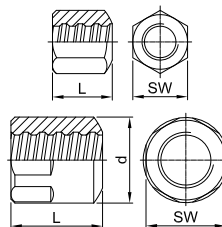
Kalottenmutter 30° dome nut 30°



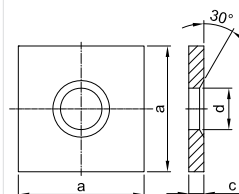
Ankerplatte ballig 30° domed washer 30°



Ankermutter ballig 30° bull nose nut 30°



Ankerplatte Konus 30° anchor plate cone 30°



Ø [mm] SW x L x d [mm] [kg] a x c x d [mm] [kg] SW x L x d [mm] [kg] a x c x d [mm] [kg]

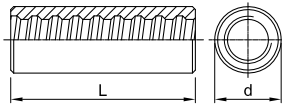
| | TR 2944 | | TR 2132 | | TR 2963 | | TR 1928 | |
|------|--------------|------|---------------|------|-----------------|------|---------------|-------|
| 18 | 30 x 35 x 46 | 0,19 | 150 x 10 x 26 | 1,70 | 36 x 45 | 0,27 | 70 x 10 x 25 | 0,34 |
| 22 | 36 x 40 x 51 | 0,26 | 150 x 10 x 34 | 1,75 | 41 x 50 | 0,37 | 90 x 12 x 30 | 0,68 |
| 25 | 41 x 50 x 58 | 0,42 | 200 x 10 x 34 | 3,10 | 46 x 55 | 0,50 | 100 x 12 x 33 | 0,83 |
| 28 | 46 x 60 x 62 | 0,62 | 200 x 12 x 40 | 3,70 | 50 x 60 | 0,65 | 120 x 20 x 40 | 2,05 |
| 30 | 46 x 60 x 62 | 0,65 | 200 x 12 x 40 | 3,70 | 55 x 65 | 0,82 | 120 x 20 x 40 | 2,05 |
| 35 | - | - | - | - | 65 x 70 | 1,33 | 150 x 30 x 47 | 4,80 |
| 43 | - | - | - | - | 80 x 90 | 2,50 | 190 x 45 x 58 | 11,70 |
| 50 | - | - | - | - | 90 x 100 x 90 | 2,81 | 210 x 50 x 60 | 16,15 |
| 57,5 | - | - | - | - | 90 x 120 x 102 | 4,40 | 245 x 50 x 70 | 21,90 |
| 63,5 | - | - | - | - | 100 x 145 x 114 | 6,88 | 280 x 60 x 78 | 33,60 |
| 75 | - | - | - | - | 100 x 130 x 108 | 3,93 | 325 x 70 x 88 | 54,50 |

Zubehör

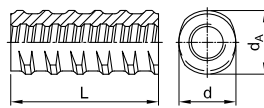
accessories

SAS SYSTEMS

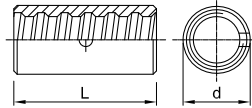
Muffe standard
coupler standard



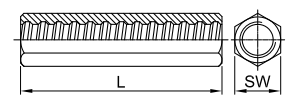
Gewindestahlmuffe
thread bar coupler



Kontaktmuffe
contact coupler



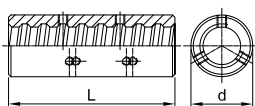
Sechskantmuffe lang
hexagonal coupler long



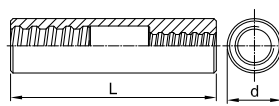
| Ø [mm] | d x L [mm] | [kg] | d x d _A x L [mm] | [kg] | d x L [mm] | [kg] | SW x L [mm] | [kg] |
|---------|------------|-------|-----------------------------|------|------------|------|-------------|------|
| TR 3003 | | | TR 3087 | | TR 3006 | | TR 3010 | |
| 18 | 36 x 100 | 0,56 | 32 x 37 x 100 | 0,44 | 27 x 70 | 0,16 | 30 x 110 | 0,42 |
| 22 | 40 x 110 | 0,71 | 36 x 42 x 110 | 0,57 | 32 x 75 | 0,25 | 36 x 120 | 0,65 |
| 25 | 45 x 120 | 0,95 | 47 x 53 x 120 | 1,18 | 40 x 80 | 0,47 | 41 x 135 | 0,95 |
| 28 | 50 x 140 | 1,37 | 47 x 53 x 140 | 1,23 | 45 x 90 | 0,52 | 46 x 145 | 1,29 |
| 30 | 55 x 150 | 1,83 | 57 x 64 x 150 | 2,19 | 45 x 90 | 0,61 | 50 x 155 | 1,65 |
| 35 | 65 x 170 | 2,94 | 65 x 72 x 170 | 3,11 | 50 x 120 | 0,82 | 60 x 175 | 2,80 |
| 43 | 80 x 200 | 5,43 | 75 x 82 x 200 | 4,77 | 65 x 160 | 2,08 | 75 x 220 | 5,61 |
| 50 | 90 x 210 | 6,92 | - | - | 70 x 170 | 2,23 | - | - |
| 57,5 | 102 x 250 | 10,31 | - | - | 80 x 180 | 3,46 | - | - |
| 63,5 | 114 x 300 | 15,89 | - | - | 90 x 200 | 4,24 | - | - |
| 75 | 108 x 260 | 8,98 | - | - | 102 x 230 | 5,85 | - | - |

SAS SYSTEMS

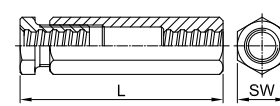
Muffe mit Drehsicherung
coupler with set screws



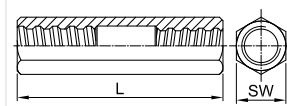
Reduziermuffe
reducing coupler



Spannschloss
turnbuckle



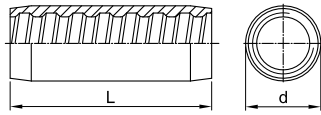
TR/T Spannmuffe
TR/T stressing coupler



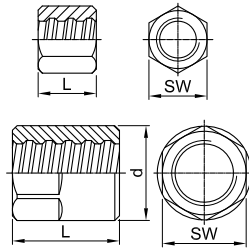
| Ø [mm] | d x L [mm] | [kg] | d x L [mm] | [kg] | SW x L [mm] | [kg] | TR/T x SW x L [mm] | [kg] |
|---------|------------|---------|------------|---------|-------------|-----------|----------------------|------|
| TR 3020 | | TR 3102 | | TR 3105 | | TR/T 3106 | | |
| 18 | 36 x 100 | 0,56 | - | - | 41 x 175 | 1,51 | - | - |
| 22 | 40 x 110 | 0,71 | 40 x 145 | 1,00 | 46 x 190 | 1,72 | - | - |
| 25 | 45 x 120 | 0,94 | 45 x 160 | 1,40 | 50 x 205 | 1,83 | - | - |
| 28 | 50 x 140 | 1,36 | 50 x 180 | 1,79 | 60 x 225 | 1,90 | 28/32 x 50 x 230 | 2,41 |
| 30 | 55 x 150 | 1,84 | 55 x 195 | 2,50 | 65 x 250 | 3,30 | - | - |
| 35 | 65 x 170 | 2,95 | 60 x 215 | 2,97 | 80 x 270 | 4,78 | 35/40 x 65 x 280 | 4,84 |
| 43 | 80 x 200 | 5,42 | 80 x 250 | 6,74 | 90 x 325 | 6,08 | 43/50 x 80 x 330 | 8,29 |
| 50 | 90 x 210 | 6,82 | 85 x 275 | 7,82 | 100 x 345 | 17,06 | - | - |
| 57,5 | 102 x 250 | 10,00 | 102 x 290 | 10,00 | 100 x 390 | 21,75 | 57,5/63,5 x 90 x 335 | 12,4 |
| 63,5 | 114 x 300 | 15,59 | 108 x 330 | 12,38 | 100 x 405 | 23,42 | - | - |
| 75 | 108 x 260 | 8,68 | 108 x 335 | 12,42 | 110 x 405 | 21,00 | - | - |

SAS SYSTEMS

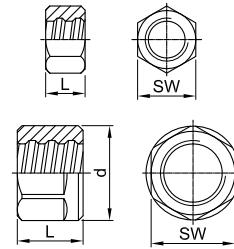
Muffe vergütet
coupler tempered



Kontermutter lang
lock nut long



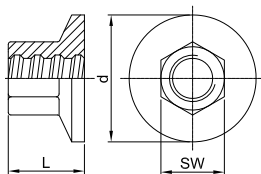
Kontermutter kurz
lock nut short



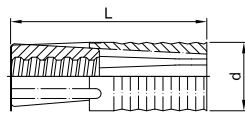
| Ø [mm] | d x L [mm] | [kg] | SW x L x d [mm] | [kg] | SW x L x d [mm] | [kg] |
|---------|------------|---------|-----------------|---------|-----------------|------|
| TR 3927 | | TR 2003 | | TR 2040 | | |
| 18 | - | - | 30 x 40 | 0,16 | 30 x 22 | 0,10 |
| 22 | 36 x 90 | 0,40 | 36 x 45 | 0,25 | 36 x 22 | 0,12 |
| 25 | 38 x 100 | 0,45 | 41 x 50 | 0,34 | 41 x 22 | 0,15 |
| 28 | 42 x 120 | 0,65 | 46 x 55 | 0,50 | 46 x 30 | 0,26 |
| 30 | 50 x 130 | 1,18 | 50 x 60 | 0,67 | 50 x 30 | 0,31 |
| 35 | 56 x 150 | 1,47 | 55 x 65 | 0,78 | 55 x 40 | 0,47 |
| 43 | 65 x 170 | 2,02 | 70 x 80 | 1,60 | 70 x 50 | 0,99 |
| 50 | 75 x 180 | 2,76 | 80 x 90 | 2,27 | 80 x 50 | 1,26 |
| 57,5 | 85 x 220 | 5,00 | 90 x 100 x 102 | 3,56 | 90 x 60 x 102 | 1,93 |
| 63,5 | 95 x 240 | 8,30 | 100 x 115 x 114 | 5,26 | 100 x 70 x 114 | 3,03 |
| 75 | - | - | 100 x 120 x 108 | 3,49 | 100 x 80 x 108 | 2,28 |

SAS SYSTEMS

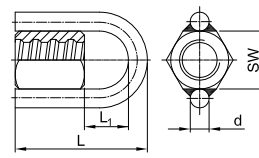
Ankerstück
anchor piece



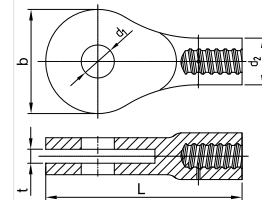
Spreizdübel
expansion shell



Ringmutter
ring nut



Gabelstück
fork piece

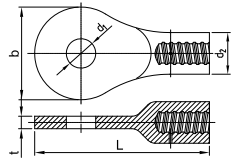


| Ø [mm] | SW x L x d [mm] | [kg] | d x L [mm] | [kg] | SW x L x d x L ₁ [mm] | [kg] | t x b x L x d ₁ x d ₂ | [kg] |
|---------|-----------------|---------|------------|---------|----------------------------------|---------|---|--------|
| TR 2073 | | TR 2136 | | TR 2927 | | TR 2090 | | |
| 18 | 32 x 35 x 55 | 0,30 | 39 x 110 | 0,43 | 36 x 85 x 16 x 15 | 0,35 | - | |
| 22 | 36 x 45 x 65 | 0,41 | 49 x 120 | 0,67 | 41 x 107 x 16 x 21 | 0,50 | - | |
| 25 | 41 x 50 x 75 | 0,60 | 49 x 120 | 0,67 | 46 x 105 x 16 x 23 | 0,65 | - | |
| 28 | 46 x 55 x 85 | 0,82 | 59 x 150 | 1,01 | 50 x 110 x 16 x 25 | 0,80 | - | |
| 30 | 50 x 60 x 90 | 1,00 | 59 x 150 | 1,01 | 55 x 115 x 16 x 27 | 1,05 | - | |
| 35 | 60 x 70 x 105 | 1,54 | - | - | - | - | 27 x 167 x 315 x 56 x 75 | 7,40 |
| 43 | 70 x 85 x 130 | 2,51 | - | - | - | - | 29 x 197 x 384 x 63 x 92 | ~12,80 |
| 50 | 80 x 100 x 150 | 4,38 | - | - | - | - | auf Anfrage / on request | |
| 57,5 | 90 x 115 x 175 | 6,67 | - | - | - | - | 42 x 248 x 453,5 x 88 x 96 | 20,40 |
| 63,5 | 100 x 125 x 190 | 8,57 | - | - | - | - | 42 x 298 x 553 x 98 x 114 | 34,50 |
| 75 | 120 x 150 x 230 | 14,73 | - | - | - | - | 54 x 328 x 627 x 108 x 116 | 44,40 |

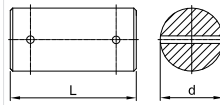
Zubehör accessories

SAS SYSTEMS

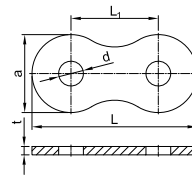
Augenstück
eye piece



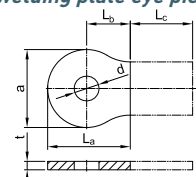
Bolzen Augenstück
bolt eye piece



Verbindungsflasche Augenstück
strap connection eye piece



Anschweißflasche Augenstück
welding plate eye piece



Ø [mm]

$a \times L \times t \times d_1 \times d_2$ [kg]

$d \times L$ [mm] [kg]

$a \times t \times d \times d_1 \times L \times L_1$ [mm] [kg]

$a \times b \times t \times d_1 \times L_a \times L_b \times L_c$ [mm]

TR 2080

TR 2081

TR 3080

TR 3081

18

- -

- -

- -

-

22

- -

- -

- -

-

25

- -

- -

- -

-

28

- -

- -

- -

-

30

- -

- -

- -

-

35

167 x 315 x 22,5 x 53 x 75 7,4

50 x 100 1,5

167 x 18 x 114 x 53 x 354 x 187 7,0

167 x 114 x 18 x 53 x 177 x 93,5 x L_c

43

197 x 384 x 25 x 63 x 92 12,8

60 x 110 2,4

197 x 20 x 134 x 63 x 414 x 217 9,6

197 x 134 x 20 x 63 x 207 x 108,5 x L_c

50

auf Anfrage / on request

57,5

248 x 453,5 x 38 x 88 x 96 20,4

85 x 145 6,4

248 x 30 x 160 x 88 x 526 x 278 21,9

248 x 160 x 30 x 88 x 263 x 139 x L_c

63,5

298 x 553 x 38 x 98 x 114 34,5

95 x 145 8,1

298 x 30 x 200 x 98 x 626 x 328 31,8

298 x 200 x 30 x 98 x 313 x 164 x L_c

75

328 x 587 x 50 x 108 x 116 44,4

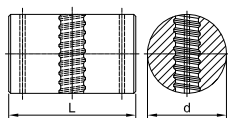
105 x 165 11,2

328 x 35 x 220 x 108 x 691 x 363 45,8

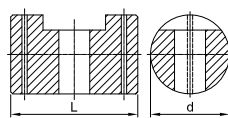
328 x 220 x 35 x 108 x 345,5 x 181,5 x L_c

SAS SYSTEMS

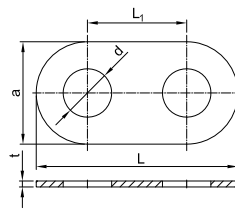
Gelenkmutter
joint nut



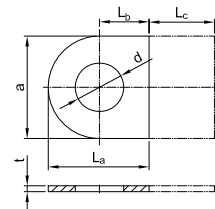
Gelenkbolzen
joint bolt



Verbindungsflasche Gelenkmutter & Gelenkbolzen
strap connection joint bolt & nut



Anschweißflasche Gelenkmutter & Gelenkbolzen
welding plate joint bolt & nut



Ø [mm]

$d \times L$ [mm] [kg]

$d \times L$ [mm] [kg]

$a \times t \times d_1 \times L \times L_1$ [mm] [kg]

$a \times t \times d_1 \times L_a \times L_b \times L_c$ [mm] [kg]

TR 2020

TR 2021

TR 2022

TR 2023

18

- -

- -

- -

-

22

- -

- -

- -

-

25

- -

- -

- -

-

28

- -

- -

- -

-

30

- -

- -

- -

-

35

120 x 193 16,0

120 x 193 14,6

260 x 15 x 123 x 512 x 252 11,0

260 x 15 x 123 x 256 x 126 x L_c

43

140 x 212 23,8

140 x 212 21,2

320 x 15 x 145 x 626 x 306 16,6

320 x 15 x 145 x 313 x 153 x L_c

50

auf Anfrage / on request

57,5

150 x 222 27,0

150 x 222 24,6

420 x 20 x 155 x 780 x 360 40,2

420 x 20 x 155 x 390 x 180 x L_c

63,5

190 x 265 53,4

190 x 265 50,2

460 x 25 x 195 x 894 x 434 59,6

460 x 25 x 195 x 447 x 217 x L_c

75

190 x 279 55,0

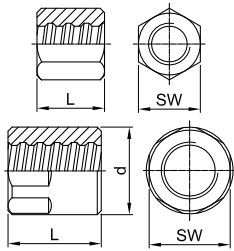
190 x 279 52,0

470 x 35 x 195 x 912 x 442 88,4

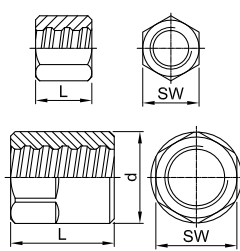
470 x 35 x 195 x 456 x 221 x L_c

SAS SYSTEMS

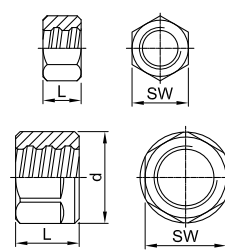
Ankermutter EP gerade anchor nut EP flat



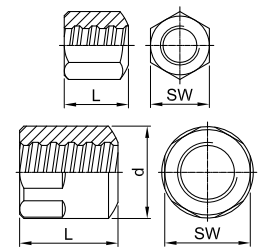
Kontermutter EP lang lock nut EP long



Kontermutter EP kurz lock nut EP short



Ankermutter EP ballig 30° bull nose EP 30°

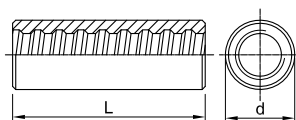


Ø [mm] SW x L x d [mm] [kg] SW x L x d [mm] [kg] SW x L x d [mm] [kg] SW x L x d [mm] [kg]

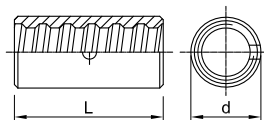
| | TR 2002 EP | | TR 2003 EP | | TR 2040 EP | | TR 2963 EP | |
|-------------|-----------------|------|-----------------|------|-----------------|------|-----------------|------|
| 18 | 36 x 55 | 0,40 | 30 x 50 | 0,20 | 30 x 30 | 0,11 | 36 x 55 | 0,38 |
| 22 | 41 x 60 | 0,45 | 36 x 60 | 0,33 | 36 x 30 | 0,16 | 41 x 60 | 0,43 |
| 25 | 46 x 70 | 0,73 | 41 x 65 | 0,48 | 41 x 30 | 0,21 | 46 x 70 | 0,64 |
| 28 | 50 x 75 | 0,82 | 46 x 70 | 0,64 | 46 x 40 | 0,34 | 50 x 75 | 0,67 |
| 30 | 55 x 80 | 1,14 | 50 x 75 | 0,84 | 50 x 40 | 0,41 | 55 x 80 | 0,98 |
| 35 | 65 x 85 | 1,75 | 55 x 80 | 1,00 | 55 x 65 | 0,75 | 65 x 85 | 1,70 |
| 43 | 80 x 105 | 3,30 | 70 x 100 | 2,12 | 70 x 80 | 1,69 | 80 x 105 | 3,20 |
| 50 | 80 X 115 X 90 | 3,43 | 80 X 110 | 2,78 | 80 X 80 | 2,02 | 90 X 115 | 2,94 |
| 57,5 | 90 x 140 x 102 | 5,60 | 90 x 120 x 102 | 4,70 | 90 x 100 x 102 | 3,80 | 90 x 140 x 102 | 5,50 |
| 63,5 | 100 x 170 x 114 | 8,60 | 100 x 140 x 108 | 6,20 | 100 x 115 x 108 | 5,00 | 100 x 170 x 114 | 8,50 |
| 75 | 100 x 150 x 108 | 4,67 | 100 x 140 x 108 | 4,07 | 100 x 90 x 108 | 2,67 | 100 x 150 x 108 | 4,60 |

SAS SYSTEMS

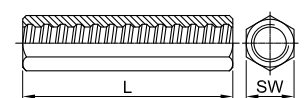
Muffe EP standard coupler EP standard



Kontaktmuffe EP contact coupler EP

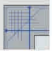














Sechskantmuffe EP lang hexagonal coupler EP long



Ø [mm] Ø x L [mm] [kg] Ø x L [mm] [kg] SW x L [mm] [kg]

| | TR 3003 EP | | TR 3006 EP | | TR 3010 EP | |
|-------------|------------|-------|------------|------|------------|------|
| 18 | 36 x 115 | 0,64 | 27 x 70 | 0,16 | 30 x 130 | 0,50 |
| 22 | 40 x 125 | 0,78 | 32 x 75 | 0,25 | 36 x 140 | 0,76 |
| 25 | 45 x 150 | 1,24 | 36 x 80 | 0,47 | 41 x 165 | 1,16 |
| 28 | 50 x 160 | 1,56 | 45 x 90 | 0,52 | 46 x 175 | 1,56 |
| 30 | 55 x 165 | 2,02 | 45 x 90 | 0,61 | 50 x 185 | 1,97 |
| 35 | 60 x 190 | 2,67 | 50 x 120 | 0,82 | 60 x 205 | 3,28 |
| 43 | 80 x 225 | 6,16 | 65 x 160 | 2,08 | 75 x 250 | 6,38 |
| 50 | 90 X 235 | 7,72 | 70 X 170 | 2,21 | - | - |
| 57,5 | 102 x 275 | 11,14 | 80 x 180 | 3,46 | - | - |
| 63,5 | 108 x 285 | 11,90 | 90 x 200 | 4,24 | - | - |
| 75 | 108 x 290 | 9,70 | 102 x 230 | 5,85 | - | - |

| Streckgrenze / Zugfestigkeit <i>yield stress / ultimate stress</i> | | Nenn- \varnothing <i>nom.-\varnothing</i> | Strecklast <i>yield load</i> | Bruchlast <i>ultimate load</i> | Fläche <i>cross section area</i> | Gewicht <i>weight</i> | Dehnung <i>elongation</i> | | | |
|--|--|---|---------------------------------|-----------------------------------|-------------------------------------|--------------------------|------------------------------|---------------------|----------------------|------------|
| Anwendungsbereiche <i>areas of application</i> | | [mm] | [kN] | [kN] | [mm ²] | [m/to] | [kg/m] | A _{gt} [%] | A ₁₀ [%] | |
| SAS 500 / 550 - grade 75 | | | | | | | | | | |
|  | Bewehrungstechnik / <i>reinforcing systems</i> | 12 | 57 | 62 | 113 | 1123,6 | 0,89 | 6 | 10 | |
| | | 14 | 77 | 85 | 154 | 826,4 | 1,21 | | | |
| | | 16 | 100 | 110 | 201 | 632,9 | 1,58 | | | |
| | | 20 | 160 | 175 | 314 | 404,9 | 2,47 | | | |
| | | 25 | 245 | 270 | 491 | 259,7 | 3,85 | | | |
| | | 28 | 310 | 340 | 616 | 207,0 | 4,83 | | | |
|  | Geotechnik / <i>geotechnical systems</i> | 32 | 405 | 440 | 804 | 158,5 | 6,31 | | | |
| | | 40 | 630 | 690 | 1260 | 101,3 | 9,87 | | | |
| | | 50 | 980 | 1080 | 1960 | 64,9 | 15,40 | | | |
| SAS 555 / 700 - grade 80 | | 63,5 | 1760 | 2215 | 3167 | 40,2 | 24,86 | 5 | | |
| <i>Alternativ SAS 550 / 620 erhältlich / alternative SAS 550 / 620 grade 75 available</i> | | | | | | | | | | |
| SAS 450 / 700 - grade 60 | | | | | | | | | | |
|  | Bergbau / <i>mining</i> | 16 | 93 | 145 | 207 | 617,3 | 1,62 | | (A ₅) 15 | |
| | | 25 | 220 | 345 | 491 | 259,7 | 3,85 | | (A ₅) 20 | |
| SAS 650 / 800 - grade 90 | | | | | | | | | | |
|  | Bergbau / <i>mining</i> | 22 | 247 | 304 | 380 | 335,6 | 2,98 | | (A ₅) 18 | |
| | | 25 | 319 | 393 | 491 | 259,7 | 3,85 | | | |
| | | 28 | 400 | 493 | 616 | 207,0 | 4,83 | | | |
| | | 30 | 460 | 565 | 707 | 180,2 | 5,55 | | | |
| SAS 670 / 800 - grade 97 | | | | | | | | | | |
|  | Geotechnik / <i>geotechnical systems</i> | 18 | 170 | 204 | 254 | 500,0 | 2,00 | 5 | 10 | |
| | | 22 | 255 | 304 | 380 | 335,6 | 2,98 | | | |
| | | 25 | 329 | 383 | 491 | 259,7 | 3,85 | | | |
| | | 28 | 413 | 493 | 616 | 207,0 | 4,83 | | | |
| | | 30 | 474 | 565 | 707 | 180,2 | 5,55 | | | |
|  | Ankerteknik / <i>tunneling & mining</i> | 35 | 645 | 770 | 962 | 132,5 | 7,55 | | | |
| | | 43 | 973 | 1162 | 1452 | 87,7 | 11,40 | | | |
| | | 50 | 1315 | 1570 | 1963 | 64,9 | 15,40 | | new | |
|  | Hochfeste Bewehrung / <i>reinforcing coupling system</i> | 57,5 | 1740 | 2077 | 2597 | 49,1 | 20,38 | | | |
| | | 63,5 | 2122 | 2534 | 3167 | 40,2 | 24,86 | | | |
| | | 75 | 2960 | 3535 | 4418 | 28,8 | 34,68 | | | |
| SAS 950 / 1050 - grade 150 | | | | | | | | | | |
|  | Spanntechnik / <i>post-tensioning systems</i> | 18 | 230 | 255 | 241 | 510,2 | 1,96 | 5 | 7 | |
| | | 26,5 | 525 | 580 | 551 | 223,2 | 4,48 | | | |
| | | 32 | 760 | 845 | 804 | 153,1 | 6,53 | | | |
|  | Geotechnik / <i>geotechnical systems</i> | 36 | 960 | 1070 | 1020 | 120,9 | 8,27 | | | |
| | | 40 | 1190 | 1320 | 1257 | 97,9 | 10,21 | | | |
| | | 47 | 1650 | 1820 | 1735 | 70,9 | 14,10 | | | |
| | | SAS 835 / 1035 - grade 150 | | | | | | | | |
|  | Spanntechnik / <i>post-tensioning systems</i> | 57 | 2155 | 2671 | 2581 | 47,7 | 20,95 | 4 | 7 | |
| | | 65 | 2780 | 3447 | 3331 | 36,9 | 27,10 | | | |
| | | 75 | 3690 | 4572 | 4418 | 27,9 | 35,90 | | | |
| SAS 900 / 1100 FA - grade 160 FA schweißbar / weldable | | | | | | | | | | |
|  | Schalungstechnik / <i>formwork ties</i> | 15 | 159 | 195 | 177 | 694,4 | 1,44 | 3 | 7 | |
| | | 20 | 283 | 345 | 314 | 390,6 | 2,56 | | | |
| | | 26,5 | 495 | 606 | 551 | 223,2 | 4,48 | | | 2 |
| SAS 900 / 1050 FC - grade 150 FC | | | | | | | | | | |
|  | Schalungstechnik / <i>formwork ties</i> | 15 | 159 | 186 | 177 | 694,4 | 1,44 | 3 | 7 | new |
| | | 20 | 283 | 330 | 314 | 390,6 | 2,56 | | | |
| SAS 950 / 1050 E - grade 150 | | 26,5 | 525 | 580 | 551 | 223,2 | 4,48 | 5 | 7 | new |
| SAS 750 / 875 FS - kaltgerollt / cold rolled - grade 120 FS schweißbar / weldable | | | | | | | | | | |
|  | Schalungstechnik / <i>formwork ties</i> | 12,5 | 90 | 120 | 132,5 | 961,5 | 1,04 | 2 | 5,5 | |
| | | 15 | 142 | 165 | 189 | 675,7 | 1,48 | | | |
| | | 20 | 245 | 285 | 326 | 390,6 | 2,56 | | | |

Zubehör für alle Abmessungen und Anwendungen lieferbar / *accessories for all dimensions and applications available*